

THE 229-A SERVICE BODY WOOD DIMENSIONS

By Neil Wilson of Boulder, Colorado — February 6, 2007

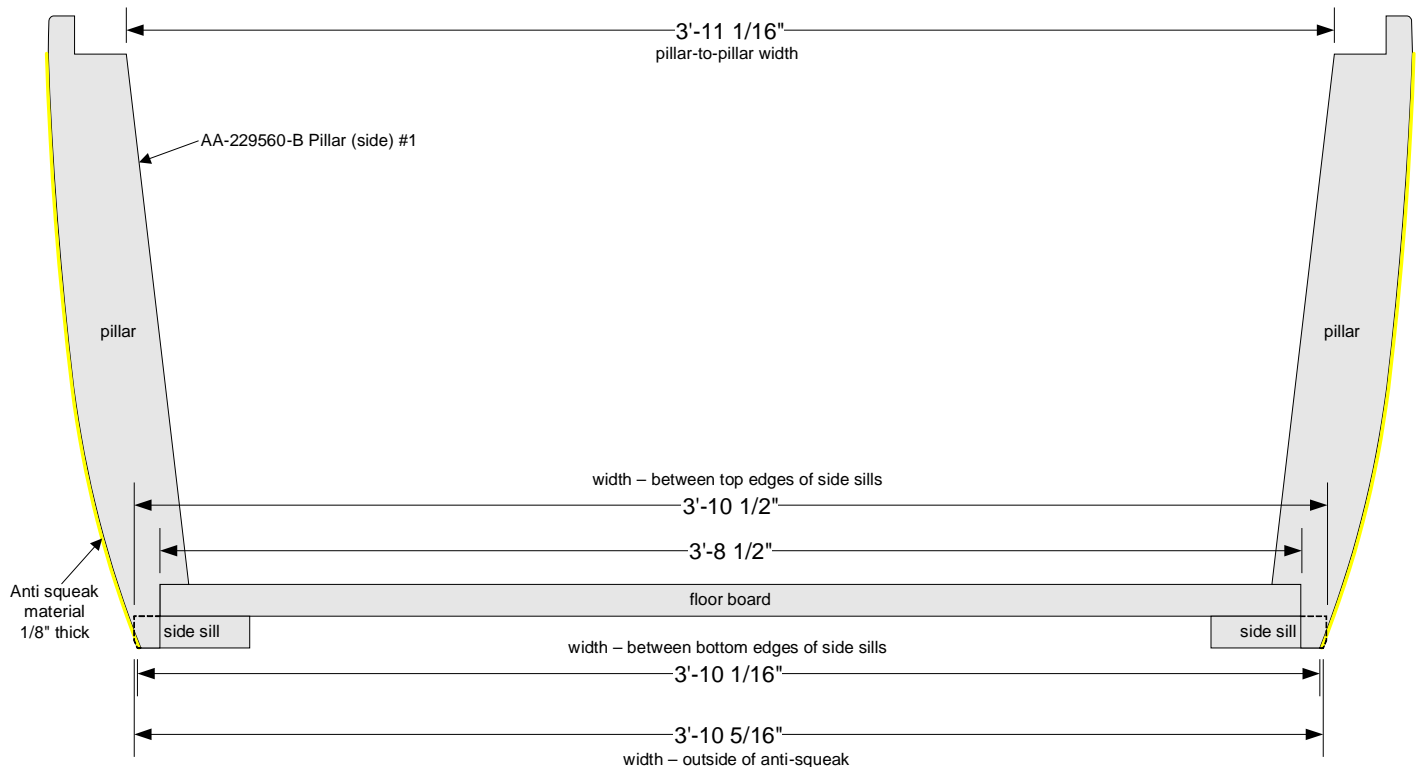
Note that the dimensions shown in this document have not been used to reproduce production parts. Only some of the original parts were available for patterns and some of the original parts were partially missing due to rotting. Consequently, missing parts were calculated based on the parts available.

Baseline Structure

The side pillars are notched for mounted on the cargo floor. The floor boards are 44-1/2" wide. This floor board width is based on two original floor boards plus confirming information provided by Ron Neumann for his Service Car. The drawing below shows a floor board with the #1 (front) pillars and some dimensions. This is the baseline structure for other drawings dealing with body width such as the tool box.

This baseline structure is very important for the body-to-cab fit. The baseline structure needs to be verified against an

actual Service Car before producing most of the wood parts. If a change is needed, then some of the drawings need to be changed as well. The baseline structure needs to be verified to insure that the Service Body will properly connect to the cab without causing distortion of the Service Body side panels. Note that welting was used between the cab and Service Body (like fender welting). Consequently, there should be enough space to allow the welting to fit.



General Information

Drawings for the side pillars were produced on the computer by measuring the original pieces. These drawings were enlarged to 100% and printed so that the drawings could be checked against the original parts. It was discovered that the outside curve of the original parts were not all exactly the same. The curve of each pillar should however be the same and should be the same as the cab or doors. Consequently, the drawings for the side pillars were modified accordingly. It is believed that the pillar drawings are accurate at this point.

The floor consists of a floor sill assembly and cargo floor boards which are together 2-1/2" thick. The total width of the floor is 3' 10-1/2" (the outside, top edge of AA-229043-B RH floor side sills to the outside of AA-229045-B LH floor side sills). The total length of the floor is 6' 9-11/16" (front of AA-229040 floor cross sill #1 to the front side of AA-229059-B upper floor cross sill #5).

The floor side sills are notched at each pillar. The notches are as wide as the pillar and are 1" deep. Consequently, the width is 3' 8-1/2" from the inside of the notches across the floor sill assembly. This is the same width as each floor board.

The following is a partial list of those parts used to develop all dimensions.

Floor Sill Assembly:

- AA-229035-B Sill (floor side) LH - this part was based on Bill Cilker's Service Car. Since the body was assembled it was hard to get an accurate measurement of the width. However, pieces of the two sills from Ron Neumann's 229-A (prior to body number 250) helped confirm the 4-1/4" sill width as well as the 3-1/4" width at the wheel well.
- AA-229040 Sill (floor cross) #1 - this part was based on Bill Cilker's Service Car. It is 3" wide by 2-1/2" thick and actually forms the front of the cargo floor as well as being a cross sill.
- AA-229041 Sill (floor cross) #2 - this was a complete part which I have and provided accurate measurements.
- AA-229042-B Sill (floor cross) #3 - this part is based on the original from Bill Cilker's Service Car. Unfortunately the corresponding side sill is not available so that the location can be verified. However, this cross member has the side pillar to floor bracket bolt holes and corresponding relieves on the bottom for the washers and nut (so that this hardware does not extend below the bottom of the cross member). Therefore, the location is on the side sills is based on this information. It may be that this cross member was located where the rear of the optional auto crane was to be placed (just not sure on this).
- To be continued-----

Illustration #1 - Floor Sill Assembly

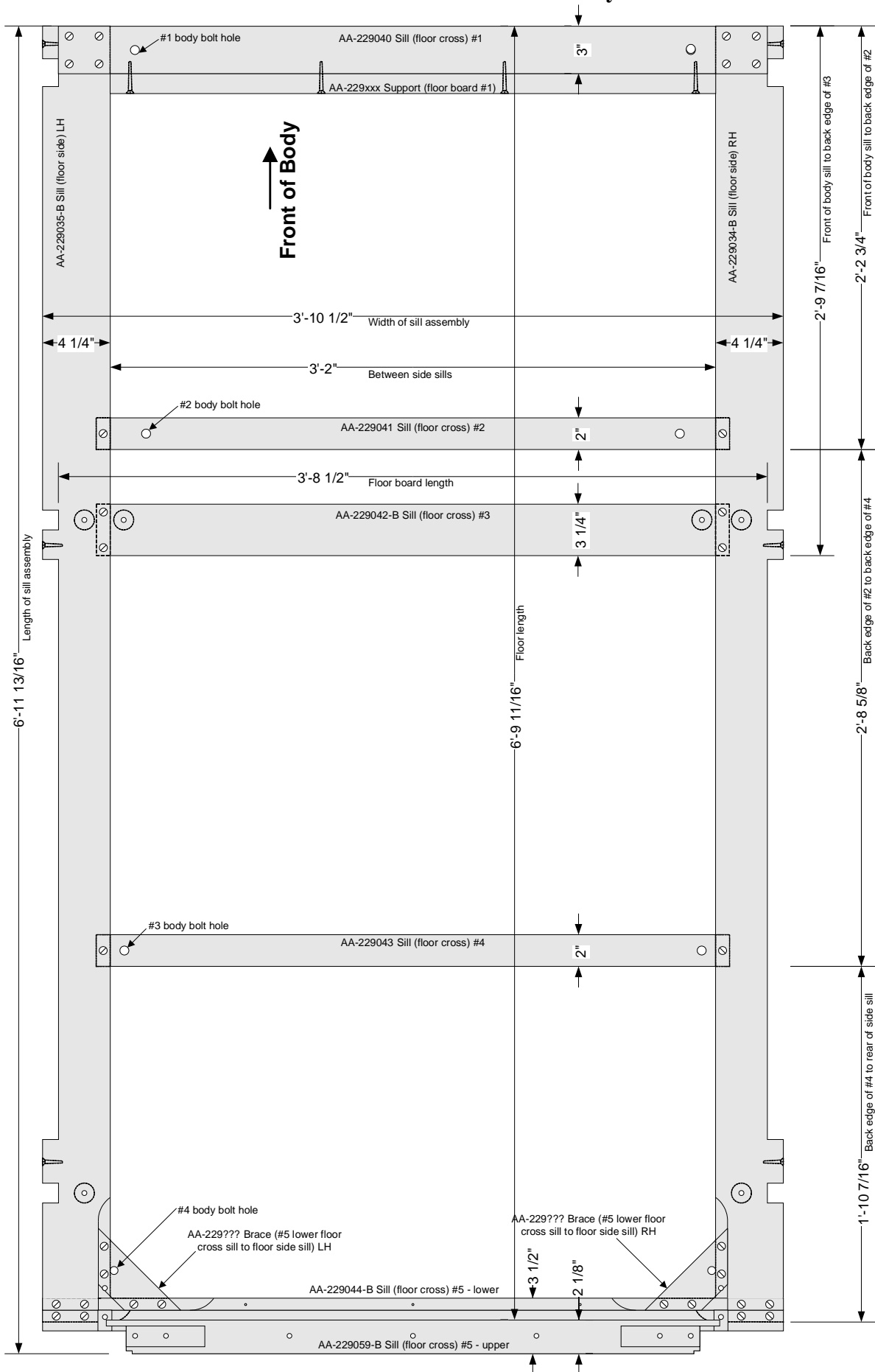
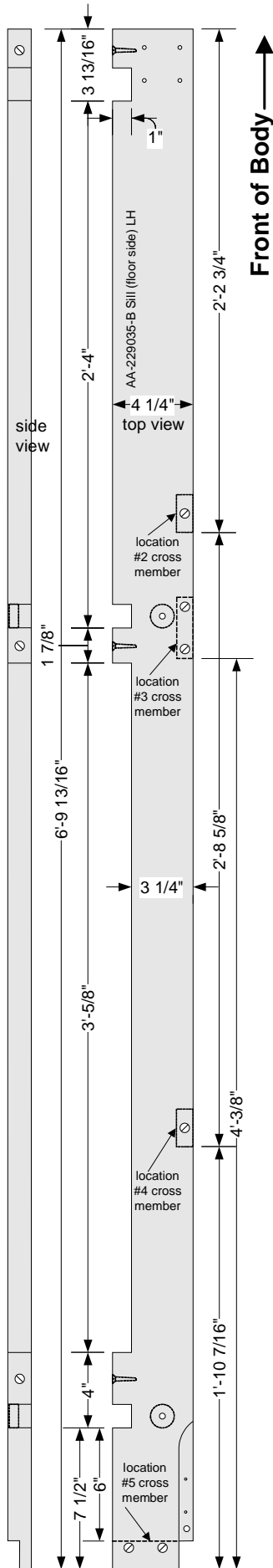


Illustration #2 - Floor Sill Assembly - Floor Side Sill



Floor Side Sill – Cross Section Detail

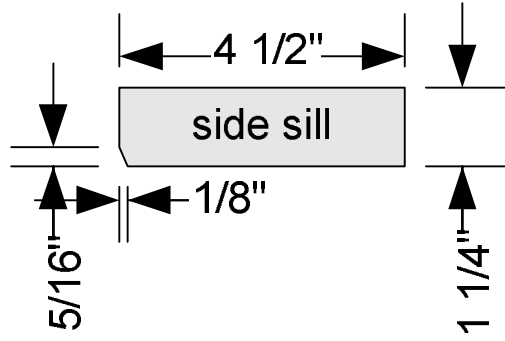


Illustration #3 - Floor Sill Assembly - Floor Cross Sills

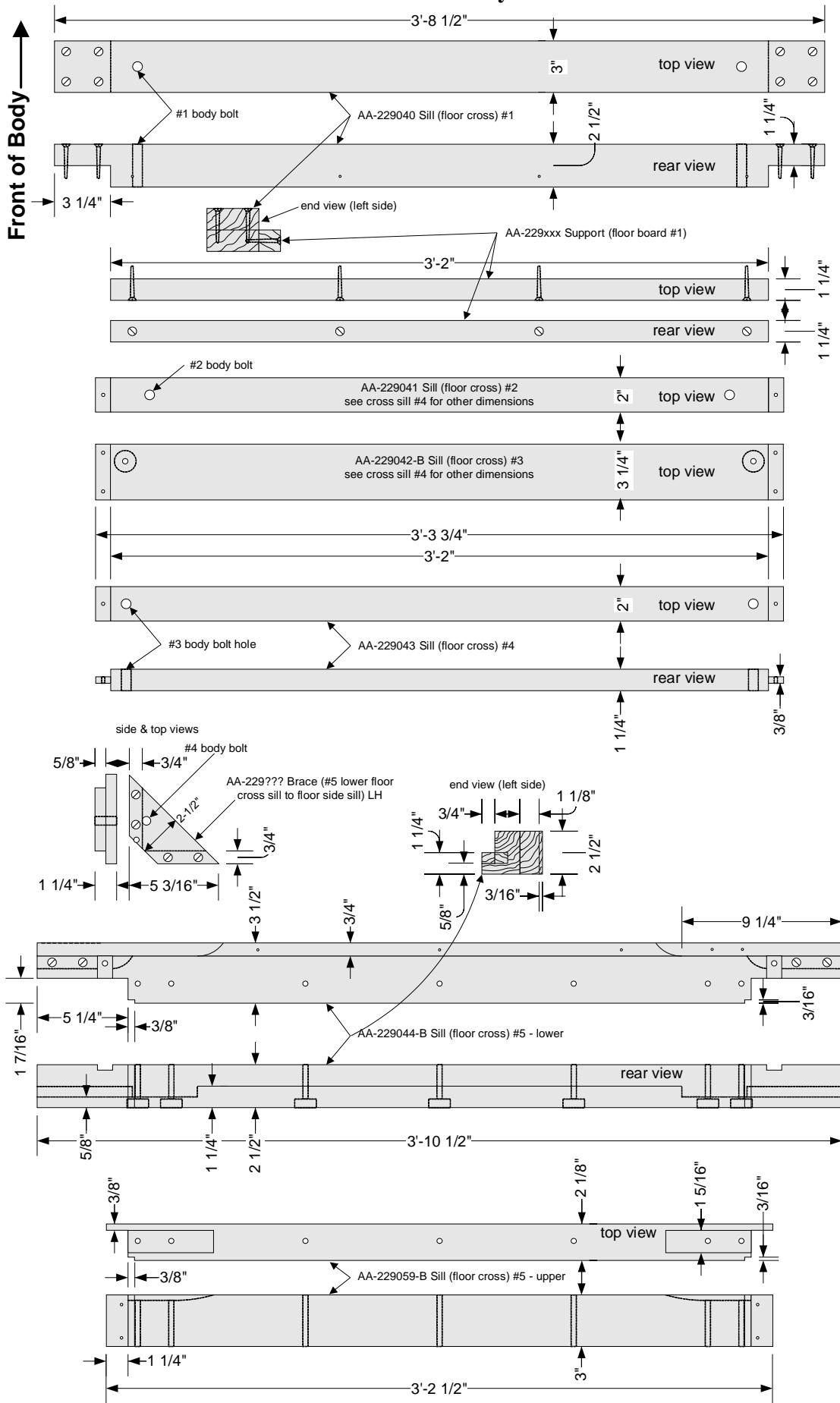


Illustration #4 - Floor Boards

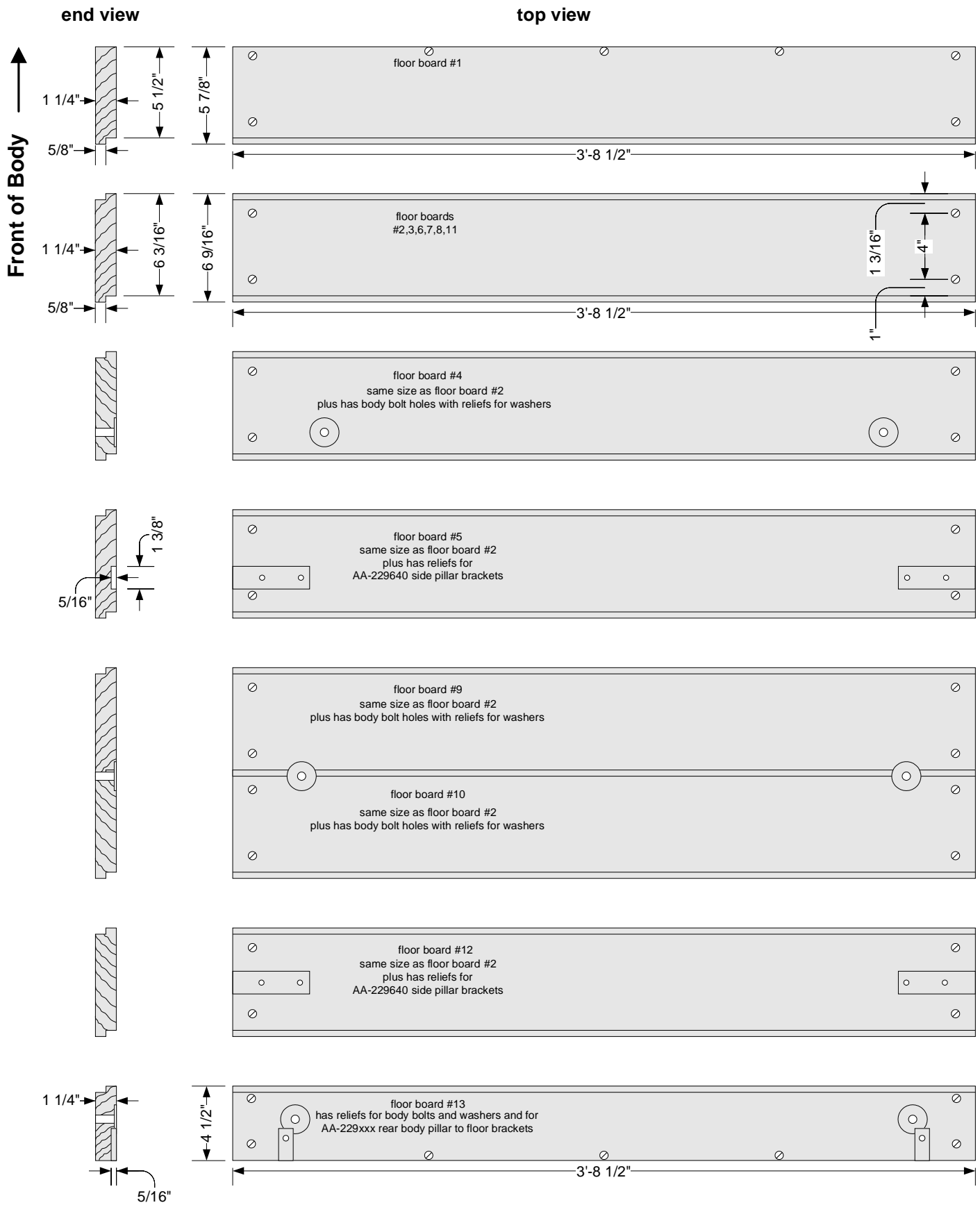
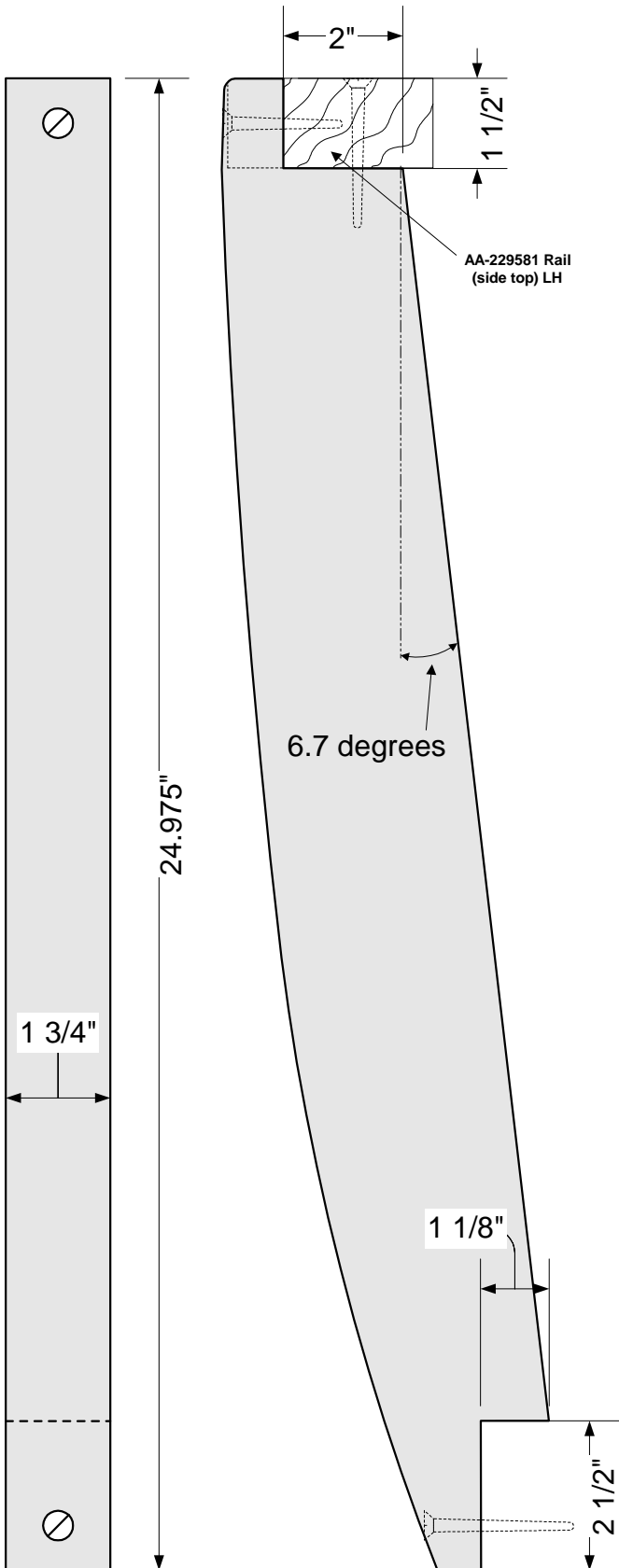


Illustration #6 - Body Sides - Pillars #1, #2, & #4

**AA-229560-B Pillar
(side) #1**



**AA-229562-B Pillar
(side) #2 & 4**

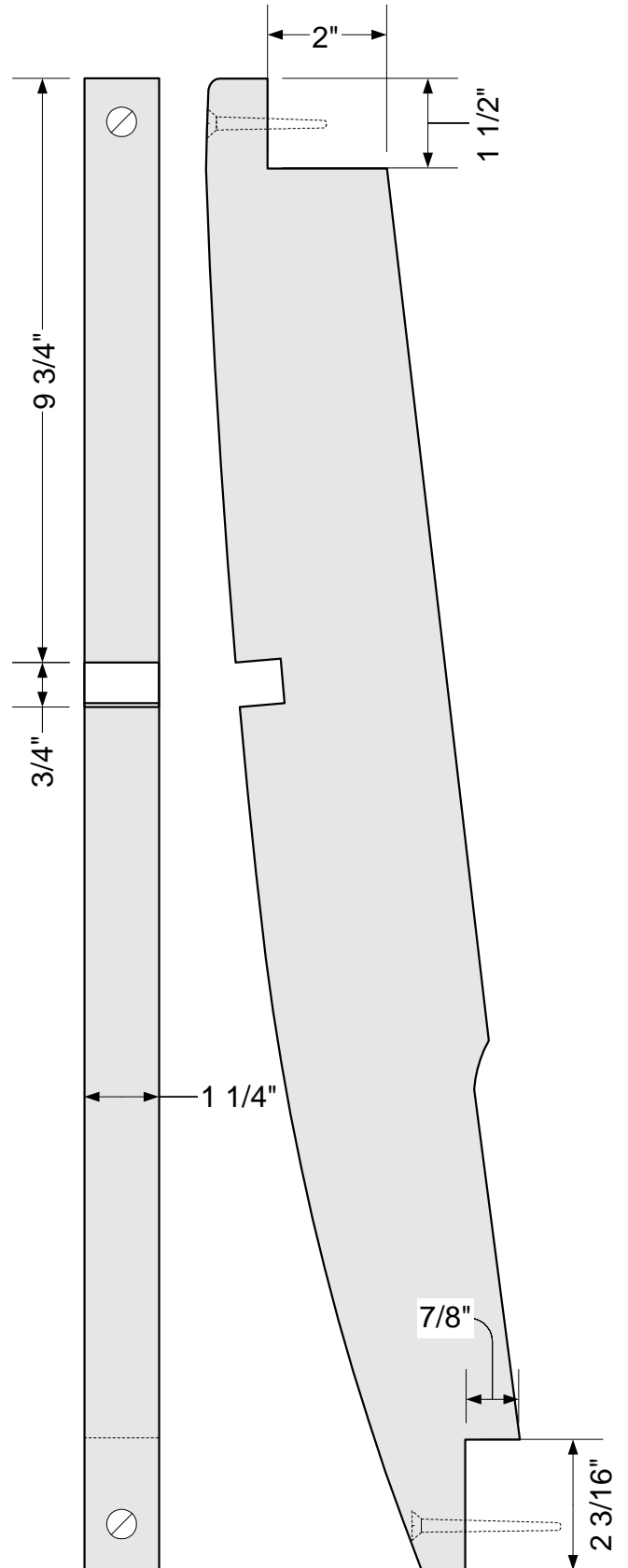


Illustration #7 - Body Sides - Pillars #3 & #5

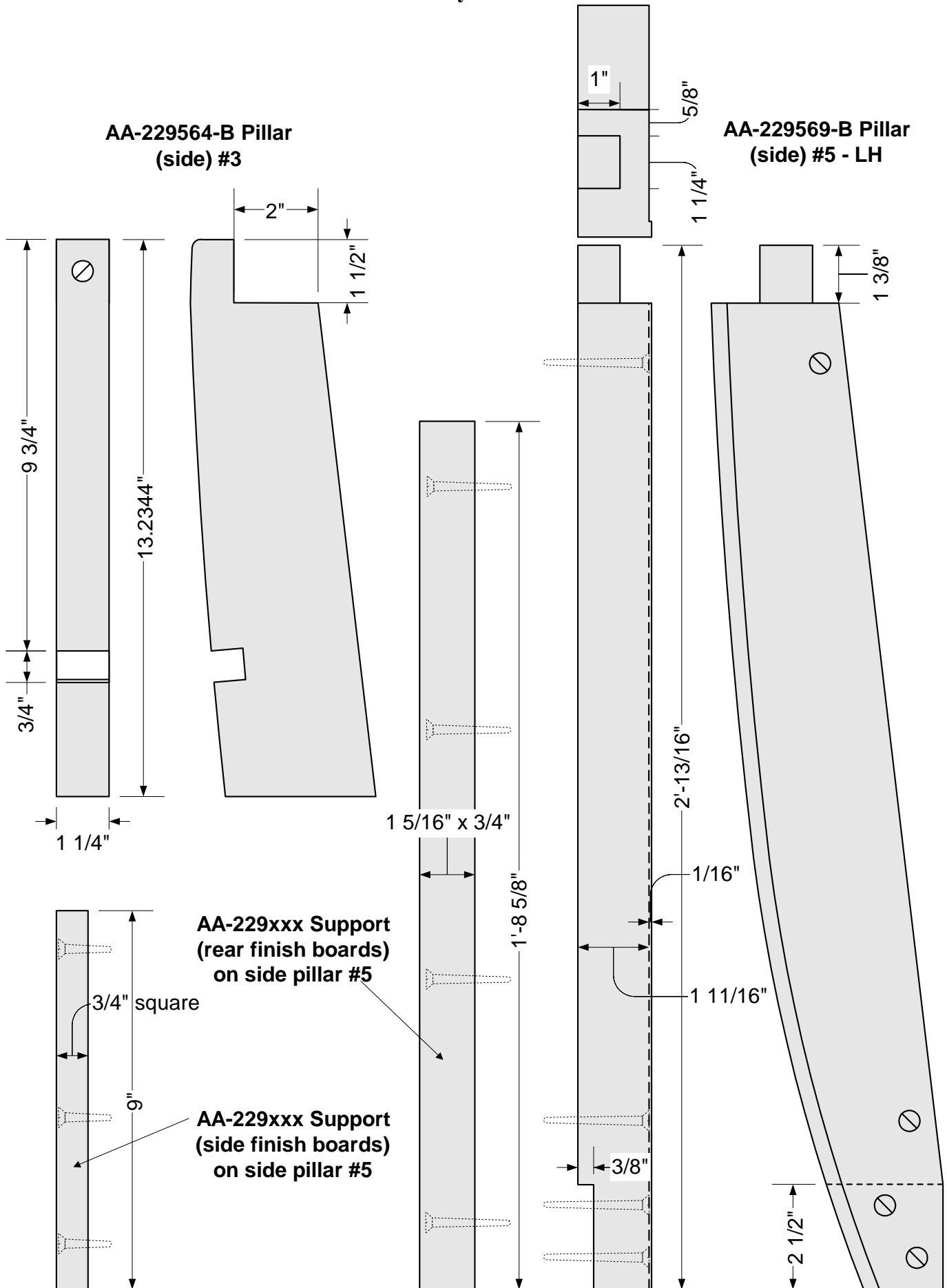
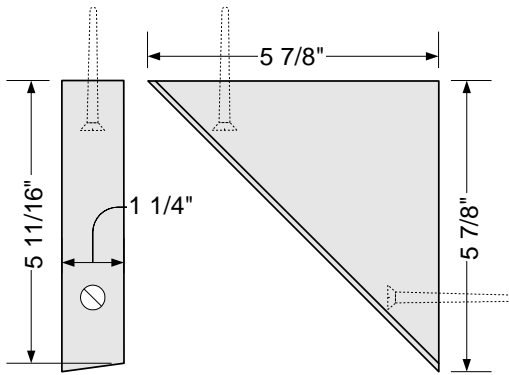
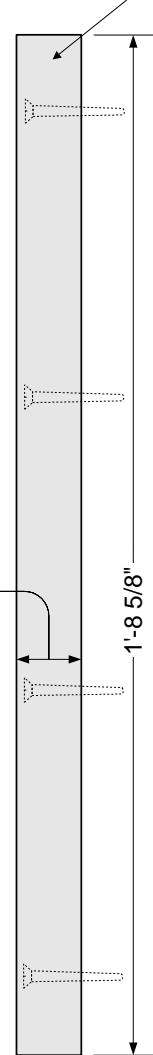


Illustration #8 - Body Sides - Miscellaneous Parts

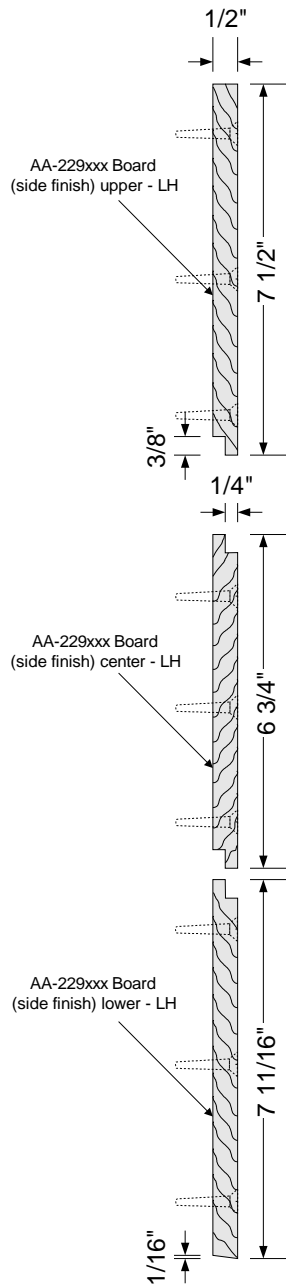
AA-229xxx Brace
(side pillar #5 corner)
LH



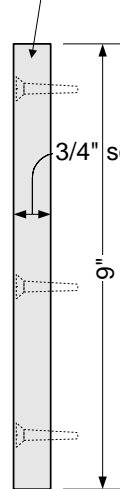
AA-229xxx Support
(rear finish boards)
on side pillar #5



Side Finish Boards



AA-229xxx Support
(side finish boards)
on side pillar #5

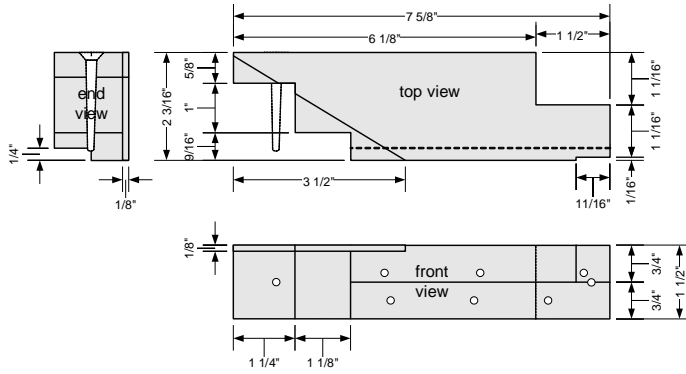


1 5/16" x 3/4"

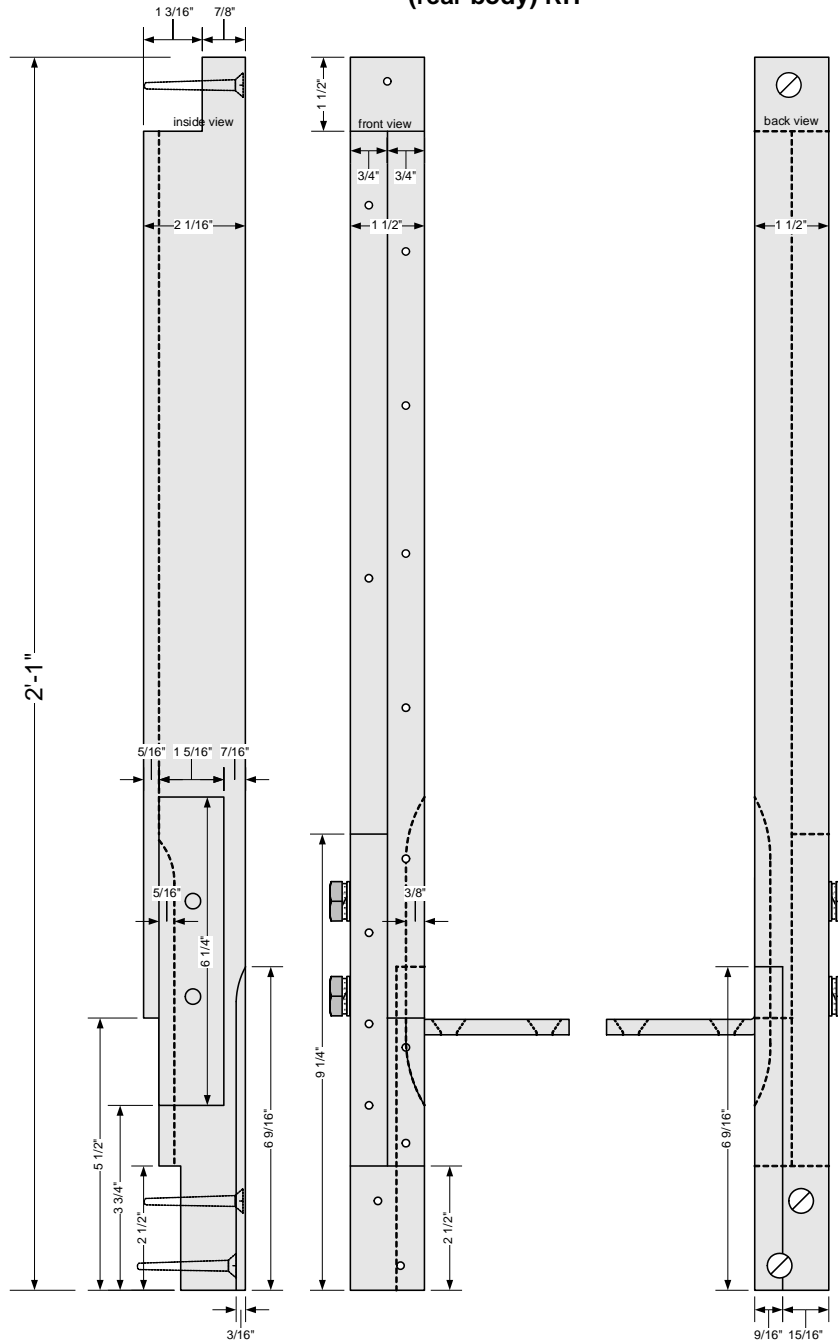
3/4" square

Illustration #9 - Body Rear - Rear Rail & Pillar

AA-229582 Rail
(rear top) LH



AA-229710-B Pillar
(rear body) RH



Tool Box - Front Wall

These measurements are based on only the following original parts - a partial board #3, the bottom cleat, and one of the center cleats. Photographs of Bill Cilkers Service Car were also

used to develop illustration #9. The tool box front wall fits inside of the side finish boards and is therefore 1" less in width than the back wall. The height was determined based on the tool box lid. The height of each board was based on the original screws found in the center cleat.

Illustration #11 - Tool Box - Front Wall

scale 1-1/2" = 1'

